

## 4. HOUSING

### 1. University Dormitories

There are five on-campus dormitories available for international students in NUT: International House, International Student House, 30<sup>th</sup> Anniversary Student House, Student Dormitory, and LinkTeCH.

\*LinkTeCH House is located on campus; however, a management company, *Hirose-no-Chintai*, runs LinkTeCH House.

Each dormitory has public facilities: a lounge, a meeting room, etc. Reservation must be made to use these facilities. Please ask at the Student Support, Student Affairs for more details.

#### ◆ Dormitory Application

Applications start in December for the next April move-in, and in May for September move-in.

#### ◆ Internet

##### - For International House, International Student House, 30<sup>th</sup> Anniversary Student House, and Student Dormitory:

All dormitory rooms have a free internet connection. To use the internet, inform your PC's MAC address (Physical address) to the Student Support, Student Affairs. Using a wireless LAN is not permitted. Please prepare a LAN cable by yourself. You can only register one MAC address per house unit.

\* The University network can be accessed 24 hours a day, but only for research purposes.

For other networks, it is available only for **6:00-25:00**.

You may choose to use an unlimited service at your own expense of 2,750yen/month with a provider designated by NUT, called ASTEC. Application form is available at the Student Support, Student Affairs.

##### - For LinkTeCH House:

Each unit has Wi-Fi in a living/dining/kitchen area. A LAN connection is also available in each bedroom.

#### ◆ Notification of Moving Out

##### - For on-campus dormitories:

Please submit a "Vacate Notice" to the Section of Student Support and book your moving out date in the online system.

##### - For LinkTeCH Hous:

Please notify the management company of your moving out date 3 months prior to the checkout date and make an appointment for the last check-up.

#### ◆ No smoking

NUT, including the dormitories, is a completely smoke-free campus. If it is discovered that you have been smoking in your dormitory room, you will be charged an additional cleaning fee and asked to leave the dormitory. Also, if your room smells of cigarettes at the time of the move-out inspection, an additional cleaning fee will be charged.

## University Dormitory Guide

Dormitory Name	① International House	② International Student House	③ 30th Anniversary Student House	④ Student Dormitory	⑤ LinkTeCH House (Share-house Dormitory) *3
Address	1603-1 Kamitomioka-machi, Nagaoka 940-2137 (on-campus)				
For	Male/couple/family students	Female students	Male/female/couple students	Male students	Male/female students
Renting Period	2 years maximum. *No extension of this period is acceptable.				Enrollment period
Room Types *1	<b>Single (12.5㎡-17.2㎡):</b> 46 rooms (42 rooms for International Students) <b>Couple (35.7㎡):</b> 8 rooms <b>Family (50㎡):</b> 5 rooms	<b>Single (13㎡):</b> 50 rooms	<b>Single (17.2㎡):</b> 18 rooms <b>Couple (35.7㎡):</b> 5 rooms	<b>Single (10㎡):</b> 360 rooms	<b>Single (9.5㎡):</b> 12 Units: 82 rooms
Furnishings	<b>Single Room</b> Kitchen, refrigerator, desk, chair, bed, curtain rail, air conditioner and toilet  <b>Couple Room/ Family Room</b> Kitchen, refrigerator, desk, chair, bed, curtain rail, air conditioner, bathroom, washing machine and drying machine	Kitchen, refrigerator, cupboard, desk, chair, bathroom, bed, bookcase, curtain rail, and air conditioner	<b>Single Room</b> Kitchen, cupboard, refrigerator, washing machine, bathroom, bed, air conditioner, desk, chair and curtain rail  <b>Couple Room</b> Kitchen, cupboard, refrigerator, washing machine, bathroom, bed, air conditioner, desk, chair and curtain rail	Desk, chair, bed, air conditioner, locker	Bed, desk, chair, curtain, wagon with drawer, air conditioner
Public Facilities	Lounge Meeting room Coin-op. shower room (100yen/10min.) Coin-op. washing machines and dryers*4	Lounge Meeting room Coin-op. washing machines and dryers*4	Lounge Meeting room Coin-op. dryers*4	Shower room Public bath Shared kitchen Coin-op. washing machines and dryers*4	<b>In each unit</b> Toilet, Shower room, Washbasin, Washing machine, Kitchen, Dining table/chairs, TV, Refrigerator, Microwave, Toaster, Vacuum cleaner  <b>For all residents</b> Multi-purpose room, Communication salon, Laundry room
Monthly Rent	Single room (with bathroom): 10,000 yen Single room (without bathroom): 8,000 yen Couple room: 20,000 yen Family room: 24,000 yen	9,000 yen	Single room: 12,000 yen Couple room: 24,000 yen	6,000 yen	32,850 yen (Internet and utility fees are included) *Parking fee is NOT included (One car: 2,200 yen/month)
Monthly Communal Fee	Single room: 1,500 yen Couple room: 2,500 yen Family room: 2,900 yen	1,500 yen	Single room: 1,500 yen Couple room: 2,500 yen	1,000 yen	Included in monthly rent.
Cleaning Expense*2	Single room (with bathroom): 13,000 yen Single room (without bathroom): 10,000 yen Couple room: 20,000 yen	11,000 yen	Single room: 11,000 yen Couple room: 18,000 yen	6,000 yen	15,400 yen (No refund)
Utility Charges	Charged according to the meters set for each room.				<b>All included in the monthly rent. Additional fee will be charged when it exceeds the limit.</b>
Payment	The dormitory fee will automatically be withdrawn on the 1st of each month from the bank account you authorized. (Room rent of the month with communal fee & utility charges of 2 month ago, bank transfer fee 110 yen) If you choose not to register for automatic bank transfer, use the payment slip you receive by post to pay for the rent at the bank (bank transfer fee 330 yen+) *Room rents for April and May will be withdrawn altogether on May 1st. For residents who move-in in September, the rent for September and October will be withdrawn altogether on October 1st. * The rent is charged monthly. It will not be calculated by day regardless of the number of days you reside in a month.				Remittance to the designated bank account. Can be withdrawn from your bank account after authorization.

\*1 Single room: a room for a single person, Couple room: a room for a married couple, Family room: a room for a family

\*2 For International House, International Student House, 30th Anniversary Student House, Student Dormitory: cleaning expense will be collected with the first utility charges and charged once every two years.

For LinkTeCH House: cleaning expense is collected before you move in.

\*3 All residents of LinkTeCH House must buy "Comprehensive Renter's Insurance for Foreign Students Studying in Japan". Insurance premium is 4,000 yen per 1 year.

\*4 Washing machine: 200 yen/time, dryer: 100 yen/time

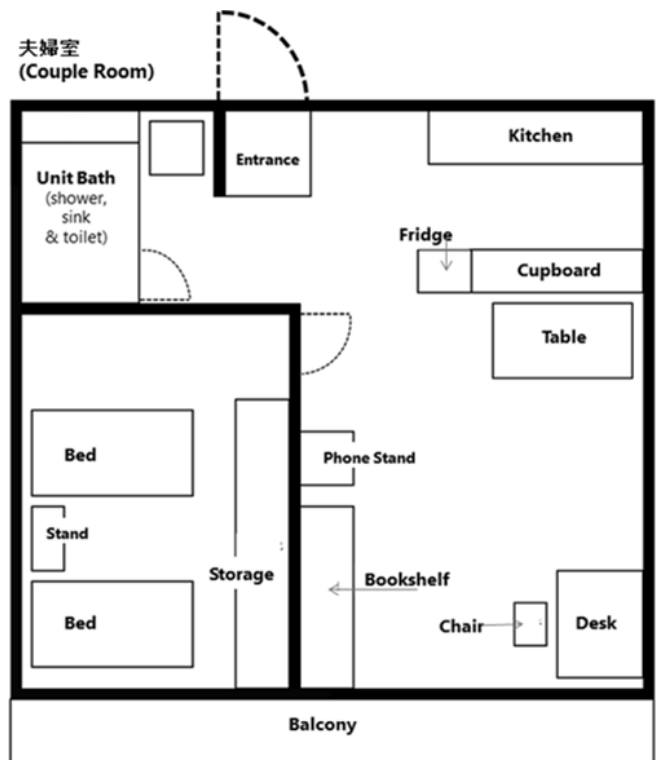
## ① International House



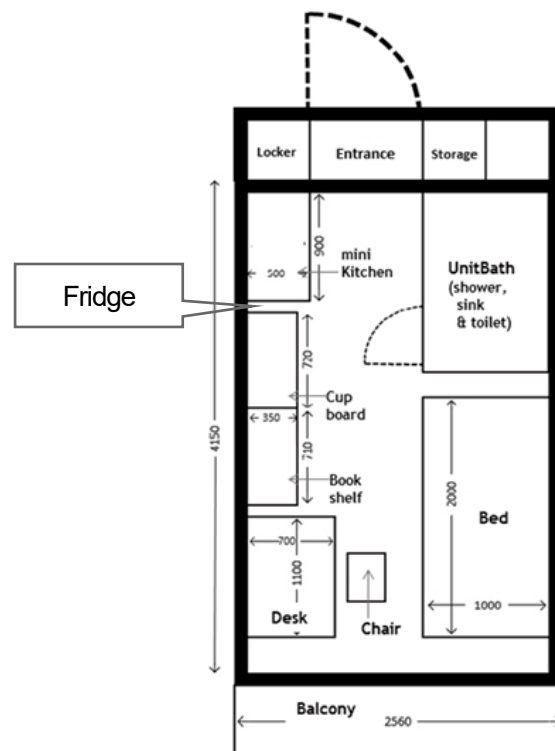
夫婦室の様子 / Couple Room



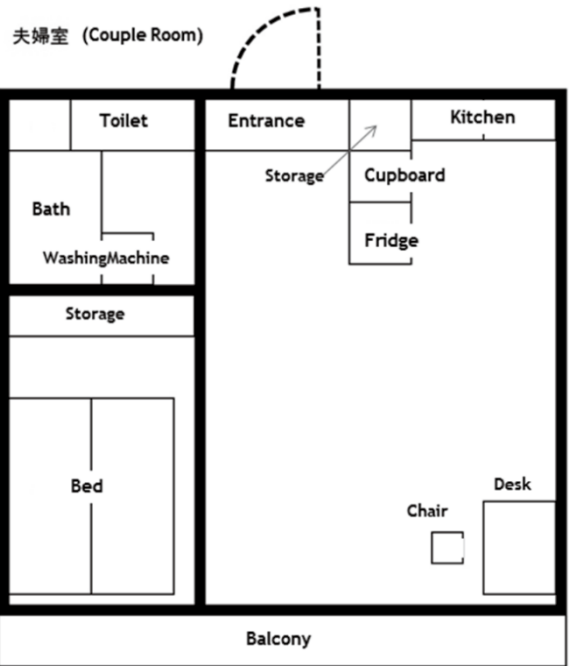
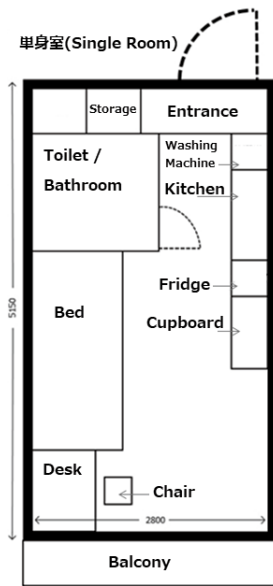
玄関ホール / Entrance Hall



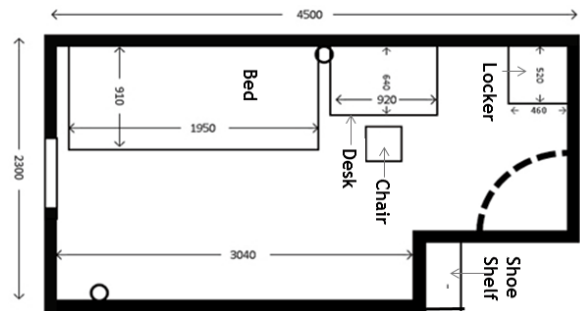
## ② International Student House



### ③ 30<sup>th</sup> Anniversary Student House



### ④ Student Dormitory



### ⑤ LinkTeCH House

LinkTeCH House is a share-house style dormitory. The dormitory consists of 12 units (82 single rooms). Each unit has 6 to 7 single rooms with common living/dining room/kitchen, shower room, toilet, washbasin, washing machine and shoe boxes.

1 unit is shared among 6 to 7 residents.



個室/Single Room



シャワールーム/Shower Room



リビング・ダイニング・キッチン/Living/Dining Room/Kitchen



洗濯機・洗面台/Washing machines, Washbasin

## 2. Renting an Apartment

Visit local real estate agencies to find an apartment or house.

Contact information of real estate agencies near NUT is listed on page 82.

### (1) SHINSAI Room & Lodging Union, *Shinsai Gesyuku Kashima Kumiai*

There are cheap apartments for single persons within 2 km from NUT campus. Students of NUT are not required to pay damage deposits, *Shiki-kin*, or key money, *Rei-kin*, to rent these apartments. If you are interested in finding an apartment with them, contact the SHINSAI Room & Lodging Union office, 0258-46-2533, or visit their website below for the latest information of available rooms.

<https://www.kashimakumiai.org/>



\*Plan well before you sign the contract. The contract requires you to live in the apartment until the end of academic year, which is in March as a general rule. If you breach your contract and move somewhere else before the contract ends, you must pay a penalty of 2-month worth rent at least.

\* Students planning to rent a parking lot for an apartment from the SHINSAI Room & Lodging Union need to purchase a voluntary insurance for unlimited bodily and property damages for NUT to be your co-guarantor.

### ◆ Lottery for reservation of *Gesyuku Kashima Kumiai*

In mid-September Shinsai Gesyuku Kashima Kumiai offers to the existing students an opportunity to join the lottery for reservation for apartments which accept new residents in April of the subsequent academic year. Details of apartments are announced by a notice, and website of Shinsai Gesyuku Kashima Kumiai.

### (2) Tips for Moving-In to An Apartment

- **Rental Contract** Almost all explanations of the room, the contract, and related documents are written in Japanese. We recommend you to have a fluent Japanese speaker with you when you start looking for a room.
- **Before Move-in** Check the room with your landlord/real estate agent. Take photos of damages or stains and all rooms while they are still empty and report it to the landlord/real estate agent and Int'l Student Affairs. This may prevent you from paying extra for repairs when you move out.
- **Rent** Rent varies according to the size, built year, and equipped facilities of the room. About 30,000 to 50,000 yen is charged for the rooms around NUT area. Apartments in Japan are not furnished, so you must get whatever is needed for yourself.
- **Damage deposit, *shiki-kin* & commission to real estate broker, *chukai-tesuryo***  
These are charged as well as one month's rent in advance when you sign the contract. *Shiki-kin* will be used to pay the cleaning expenses for when you move out. When *shiki-kin* was more than what actually costed, the remaining amount will be refunded to you; but if it was not enough to cover all expense to restore the room, you will need to pay the exceeding amount additionally.
- **Monthly Payment** In general, you will pay the rent for the next month at the end of the month.  
This may be done by automatic transfer of your bank. In addition to the public utility charges, common property maintenance fee, *Kyoeki-hi*, and neighborhood association fee, *Chonaikai-hi*, may be added to your monthly expenses.
- **Roommate** If you wish to live with your friend or bring your family to stay with, you need an approval from your landlord. Make sure to inform and consult with the landlord beforehand.
- **Guarantor** A rental contract usually requires a guarantor in case of property damages and overdue payment. Please ask an eligible person in Japan to become your guarantor. When you are unable to find one, please inform Int'l Student Affairs. NUT has "Guarantor Program for International Students". Please read page 44 for details.

### 3. Guarantor Program for International Students

If you cannot find a guarantor for a housing contract, the Manager of Student Affairs will become the guarantor under NUT Guarantor Program for International Students. \*You can use this system for real estate agencies listed on p.82. If you wish to sign a contract for an apartment with a real estate agency not listed, please contact the Int'l Student Affairs.

#### ◆ Conditions

- 1) You must be a student of NUT.
- 2) You must have a resident status (visa) of "Student".
- 3) The landlord of your apartment must agree with you to use this guarantor program.
- 4) You must buy the Comprehensive Insurance for International Students by JEES.

#### ◆ Comprehensive Insurance system for International Students by JEES

This system helps international students to conclude a housing agreement. It comprises comprehensive lodging insurance (lessee liability and personal liability insurance) and guarantor indemnity funds.

The premium is 4,000 yen for 1 year and 8,000 yen for 2 years.

#### ◆ Necessary Documents to Apply

If you would like to apply, you need the following documents. Please come to Int'l Student Affairs for details.

- 1) Application for the guarantor program: available at Int'l Student Affairs
- 2) Rental contract issued by your real estate agency: must be signed and sealed by your landlord.
- 3) 2 original copies of Agreement: must be signed and sealed by your landlord.
- 4) Your certificate of JEES insurance: Int'l Student Affairs will issue one after your payment.

#### ◆ Notes

- 1) This guarantor program is for NUT students only. If you graduate or are expelled from NUT, we inform your landlord of the termination of the guarantor program. If you wish to continue living in the same apartment after your status of residence changes, you must find a new guarantor.
- 2) If you wish to cancel the program, you may request a refund depending on the remaining period.
- 3) Not applicable to those who share a room with non-NUT international students.
- 4) Before moving in, you will need to take photos of all the rooms in your apartment (incl. the kitchen, bathroom and toilet) especially any stains or scratches and email them to the Int'l Student Affairs.

### 4. Public Housing run by Nagaoka city

Nagaoka city provides a low-rent housing for residents whose income is below average. Those in need of housing can contact the housing consulting office: 0258-39-2229 at the city office.

- When you are moving in, you are responsible for the expense of setting up the utilities i.e. water heater, and you need to pay for the removal fee when you are moving out also.
- Public housing tends to require a much higher charge for restoring to its original state when moving out. Before you move in, we recommend you to take pictures of every room and notable damages at empty condition. You can refer to those pictures at the move-out checkup.
- You are required to notify the person in charge well in advance before moving out so that you can discuss the restoration of the rooms with the person in charge in beforehand.

## 5. Public Utility Charges

Public utility charges include electricity, gas, water and sewage.

Automatic withdrawal is recommended. Otherwise, payment slips will be sent to you by post every month (every 2 months for water), and you have to go to a bank or convenience store to make payment. Please go visit your bank to complete a process to start the automatic withdrawal. Please inform each utility company every time you move-in or move-out. Also, make sure to complete all the payments of the charges before you move out.

When you make an inquiry, be ready to present your customer number stated on the bill/receipt.

\*NUT Dormitory residents do not need to make a contract with these companies.

Type	Prevention and Trouble Handling	Contact
Electricity	<ul style="list-style-type: none"> <li>● Power outage: if an outage occurs due to a lightning surge or system failure, you may have to wait long before your service is restored. Prepare a flashlight or candles beforehand.</li> <li>● Blackout in your room may be caused by over usage of electricity. Please turn off unnecessary electric appliances and turn the breaker switch back on.</li> <li>● When you leave your place for days, <u>do not turn the breaker off</u>. In winter, it may cause water pipes to burst from freezing.</li> </ul> <p><b>[When start using electricity]</b> Call the company and inform your move-in date. Find the circuit breaker in your room and flip the ampere breaker from “off” to “on”. Fill out an application form and mail it to the company.</p> <p>[Customer number] xx-xxx-xx-xx-xxxxxx (17digits)</p>	Tohoku Electric Power Co. Ltd. TEL: 0120-066-774
Gas	<ul style="list-style-type: none"> <li>● When you are not using the gas, <b>keep the supply valve closed</b>.</li> <li>● When you notice a gas leak, close the supply valve immediately and <b>open all the windows and doors to ventilate</b>.</li> <li>● If you do not know the cause of the leak, call the gas company immediately.</li> </ul> <p><b>[When start using gas]</b> Call the gas company and make an appointment. At the scheduled date and time, a staff will come over to check and activate your gas lines.</p> <p>[Customer number] xxxx-xxx-xxxx (11digits)</p>	Hokuriku Gas Co. Ltd. TEL: 0258-33-3200
Water and Sewage	<ul style="list-style-type: none"> <li>● You can safely drink water from the tap anywhere in Japan.</li> <li>● Water and sewerage are billed together in every 2 months.</li> <li>● If you are away for days in winter, turn off the main water valve and empty the pipes to prevent a burst from freezing.</li> <li>● If water pipe freezes in winter, wrap it with a towel and pour not boiling water but warm water on it. If no water comes out from the tap every after that, turn off the faucet. If a pipe bursts, turn off the valve inside meter box and then report it.</li> <li>● <b>Do not discard oil or food scrap down the drain</b>. It will clog the drainpipe.</li> <li>● Do not flush anything other than soluble toilet paper down the toilet.</li> </ul> <p><b>[Before start using water]</b> Register online or phone the company and inform your move-in date. Open the valve and water should come out from the faucet.</p> <p>[Customer number] xx-xxxxxxx (9digits)</p>	Nagaoka City Suido-kyoku TEL: 0258-35-1618

## 6. Trash Disposal and Recycling

In Nagaoka, days and places of garbage collection are set by each district. You must separate the trash and recycling items into categories before disposal. Garbage disposed on a wrong date and manner will not be collected, and that may cause troubles in neighborhood.

Please check the detailed information, in the URL below.

[https://www.city.nagaoka.niigata.jp/kurashi/cate13/chikyuhiroba\\_en/notice.html](https://www.city.nagaoka.niigata.jp/kurashi/cate13/chikyuhiroba_en/notice.html)



You can also get a garbage disposal booklet issued by the city at the Student Support, Student Affairs.

- **Use designated prepaid plastic bags:** food scraps, burnable trash and non-burnable trash must be separately put in the designated prepaid bags.
- **Re-usable resource:** plastic containers and wrapping materials, glass bottles, cans, PET plastic bottles must be separately put in a transparent or translucent plastic bag to be recycled. Used clothes, blankets, towels, sheets, etc. are collected to be reused except for January to March.
- **Large-sized trash:** for *Futon* mattress, bed, bicycle, furniture, etc., call the city office (TEL 0258-25-0053) to schedule a collection date and check how much the disposal cost (200 to 1,000 yen) is, then purchase a city's handling ticket to the cost amount. On the scheduled collection date, paste the ticket to the item and leave it in front of your house.
- **Four household electrical appliances:** air-conditioner, washing machine/dryer, TV, and fridge/freezer cannot be collected by the city office, so you must call one of the city's authorized collectors (*Hanazono*-service is the nearest to NUT: 0258-29-1122) to schedule for collection. PC, vehicle-related wastes such as tires, hub, and battery oil should be disposed the same way. Do not leave them behind.
- **Cooking oil:** do not drain cooking oil as it could clog the sink. Used cooking oil should be absorbed with paper or solidified with a coagulant, and then put out as burnable trash. Alternatively, you may put it in a plastic bottle and bring it to designated recycling center, which is to be reused as diesel fuel.

**\*You can purchase the garbage bags and handling tickets at the campus store, *Baiten*, and at most shops in the city.**

## 7. Manners as a community member

Recently, there has been an increase in complaints from residents of apartments to the university, particularly regarding noise and parking issues. Once a problem arises with a neighbor within an apartment, it takes a great deal of time and effort to resolve. Let's make an effort to communicate with your neighbors, such as greeting them when you see them, to ensure a comfortable living environment for everyone.

To have a pleasant relationship with your neighbors, please follow the following basic rules and manners:

- **Noise:** noise is one of the reason results in troubles with neighbors. Avoid shouting, playing loud music, or talking loud at night even when you gather with your friends.
- **Odor:** DO NOT leave trash in the hall and/or at the balcony of your complex. You might not care about the odor, but your neighbors might.
- **Parking:** you must have a parking contract with the management company to park your vehicles. Without a parking permit, you are not allowed to park your car. Be aware not to block someone else's parking space, driveways, or sidewalks.
- **Fire safety:** outdoor activities which involve fire such as barbecue are prohibited except for designated area with approval. Be extra careful with a source of fire at home at all time.
- **Room Share:** staying at your friend's dormitory or sharing a room with friend(s) without an approval from the landlord/NUT is violation of regulations. You may be required to move-out.

**\*If you have any questions related to housing, please contact Int'l Student Affairs.**



## 8. Moving out

When moving to a new place, you must follow procedures to terminate the current housing contract. You must submit your landlord (Student Support, Student Affairs, in case of dormitory) a Moving-out Notice no later than a full month in advance; otherwise, an additional month's rent may be charged. In case of LinkTeCH House, you must notify the management company of your moving out at least three months in advance.

### ● Check List: When Moving out ●

Please complete all of the following procedures when you move your place to another.

#### ● At the city office

- Notify your new address within the first 14 days after moving in to a new place.  
→ The new address will be written on the back of your residence card with an official stamp.

#### ● At NUT

- Present your updated residence card to Int'l Student Affairs, which will make a copy for a record.
- Apply for NUT guarantor program for the new housing contract at Int'l Student Affairs, if needed.
- Update your address in your LiveCampus page.

#### ● Others

- Inform an electricity, gas, and water company of your moving-out day in advance. Make sure to complete your last payment, notify your new address to each of the company so that they can send you any unpaid bills if necessary.
- Inform all relevant offices, especially bank, of your new mailing address.
- Apply for the post office's forwarding service.  
Free of charge for 1 year. Application postcard is available at the Int'l Student Affairs. It can also be done online but currently available in Japanese only:  
<https://welcometown.post.japanpost.jp/etr/>
- Update your address on your driver's license at the police station or at a license center.
- Update your address for Automobile Tax registration

