

◆ **Education for Children**

Your children who live with you in Japan may enroll Japanese educational institutions.

● **Nursery school, *Hoiku-en***

When your child cannot be looked after during the daytime, you may apply for a nursery school. Please inquire the city's welfare office, *Hoiku-ka*. You may need to present proof(s) of why the parents are occupied during the day. Monthly childcare fee is determined by the city based on your income. Each nursery may have additional set of fees.

● **Kindergarten, *Yochi-en***

Children under the age of entering elementary school may enroll at a kindergarten. Fees are fixed and set by each school regardless of the family's income. For detail, contact kindergartens.

● **Elementary School, *Sho-gakko*, and Junior High School, *Chu-gakko***

Sending children to an elementary school for 6 years and a junior high school for 3 years is obligation to all parents living in Japan. Which school to attend is decided based on where you live. Public schools are free of charge in tuition and text books; however, the cost for school lunch and educational materials are needed to be paid.

4. HOUSING

1. University Dormitories

There are five on-campus dormitories available for international students in NUT: International House, International Student House, 30th Anniversary Student House, Student Dormitory, and LinkTeCH.

*LinkTeCH House is located on campus; however, a management company, *Hirose-no-Chintai*, runs LinkTeCH House.

Each dormitory has public facilities: a lounge, a meeting room, etc. Reservation must be made to use these facilities. Please ask at the Student Support, Student Affairs for more details.

◆ **Dormitory Application**

Applications start in December for the next April move-in, and in May for September move-in.

◆ **Internet**

- For International House, International Student House, 30th Anniversary Student House, and Student Dormitory:

All dormitory rooms have a free internet connection. To use the internet, inform your PC's MAC address to the Student Support, Student Affairs. Using a wireless LAN is not permitted. Please prepare a LAN cable by yourself. You can only register one MAC address per house unit.

*The University network is available for 24 hours. However, for other networks, it is available only for **6:00-1:00**.

You may choose to use an unlimited service at your own expense of 2,750yen/month with a provider designated by NUT, called ASTEC. Application form is available at the Student Support, Student Affairs.

- For LinkTeCH House:

Each unit has Wi-Fi in a living/dining/kitchen area. A LAN connection is also available in each bedroom.

University Dormitory Guide

Dormitory Name	① International House	② International Student House	③ 30th Anniversary Student House	④ Student Dormitory	⑤ LinkTeCH House (Share-house Dormitory) *3
Address	1603-1 Kamitomioka-machi, Nagaoka 940-2137 (on-campus)				
For	Male/couple/family students	Female students	Male/female/couple students	Male students	Male/female students
Renting Period	2 years maximum. *No extension of this period is acceptable.				Enrollment period
Room Types *1	Single (12.5㎡-17.2㎡): 46 rooms (42 rooms for International Students) Couple (35.7㎡): 8 rooms Family (50㎡): 5 rooms	Single (13㎡): 50 rooms	Single (17.2㎡): 18 rooms Couple (35.7㎡): 5 rooms	Single (10㎡): 360 rooms	Single (9.5㎡): 12 Units: 82 rooms
Furnishings	Single Room Kitchen, refrigerator, desk, chair, bed, curtain rail, air conditioner and toilet Couple Room/ Family Room Kitchen, refrigerator, desk, chair, bed, curtain rail, air conditioner, bathroom, washing machine and drying machine	Kitchen, refrigerator, cupboard, desk, chair, bathroom, bed, bookcase, curtain rail, and air conditioner	Single Room Kitchen, cupboard, refrigerator, washing machine, bathroom, bed, air conditioner, desk, chair and curtain rail Couple Room Kitchen, cupboard, refrigerator, washing machine, bathroom, bed, air conditioner, desk, chair and curtain rail	Desk, chair, bed, air conditioner, locker	Bed, desk, chair, curtain, wagon with drawer, air conditioner
Public Facilities	Lounge Meeting room Coin-op. shower room (100yen/10min.) Coin-op. washing machines and dryers*4	Lounge Meeting room Coin-op. washing machines and dryers*4	Lounge Meeting room Coin-op. dryers*4	Shower room Public bath Shared kitchen Coin-op. washing machines and dryers*4	In each unit Toilet, Shower room, Washbasin, Washing machine, Kitchen, Dining table/chairs, TV, Refrigerator, Microwave, Toaster, Vacuum cleaner For all residents Multi-purpose room, Communication salon, Laundry room
Monthly Rent	Single room (with bathroom): 10,000 yen Single room (without bathroom): 8,000 yen Couple room: 20,000 yen Family room: 24,000 yen	9,000 yen	Single room: 12,000 yen Couple room: 24,000 yen	6,000 yen	32,850 yen (Internet and utility fees are included) *Parking fee is NOT included (One car: 2,200 yen/month)
Monthly Communal Fee	Single room: 1,500 yen Couple room: 2,500 yen Family room: 2,900 yen	1,500 yen	Single room: 1,500 yen Couple room: 2,500 yen	1,000 yen	Included in monthly rent.
Cleaning Expense*2	Single room (with bathroom): 13,000 yen Single room (without bathroom): 10,000 yen Couple room: 20,000 yen	11,000 yen	Single room: 11,000 yen Couple room: 18,000 yen	6,000 yen	15,400 yen (No refund)
Utility Charges	Charged according to the meters set for each room.				All included in the monthly rent. Additional fee will be charged when it exceeds the limit.
Payment	The dormitory fee will automatically be withdrawn on the 1st of each month from the bank account you authorized. (Room rent of the month with communal fee & utility charges of 2 month ago, bank transfer fee 110 yen) If you choose not to register for automatic bank transfer, use the payment slip you receive by post to pay for the rent at the bank (bank transfer fee 330 yen+) *Room rents for April and May will be withdrawn altogether on May 1st. For residents who move-in in September, the rent for September and October will be withdrawn altogether on October 1st. * The rent is charged monthly. It will not be calculated by day regardless of the number of days you reside in a month.				Remittance to the designated bank account. Can be withdrawn from your bank account after authorization.

*1 Single room: a room for a single person, Couple room: a room for a married couple, Family room: a room for a family

*2 For International House, International Student House, 30th Anniversary Student House, Student Dormitory: cleaning expense will be collected with the first utility charges.

For LinkTeCH House: cleaning expense is collected before you move in.

*3 All residents of LinkTeCH House must buy "Comprehensive Renter's Insurance for Foreign Students Studying in Japan". Insurance premium is 4,000 yen per 1 year.

*4 Washing machine: 200 yen/time, dryer: 100 yen/time

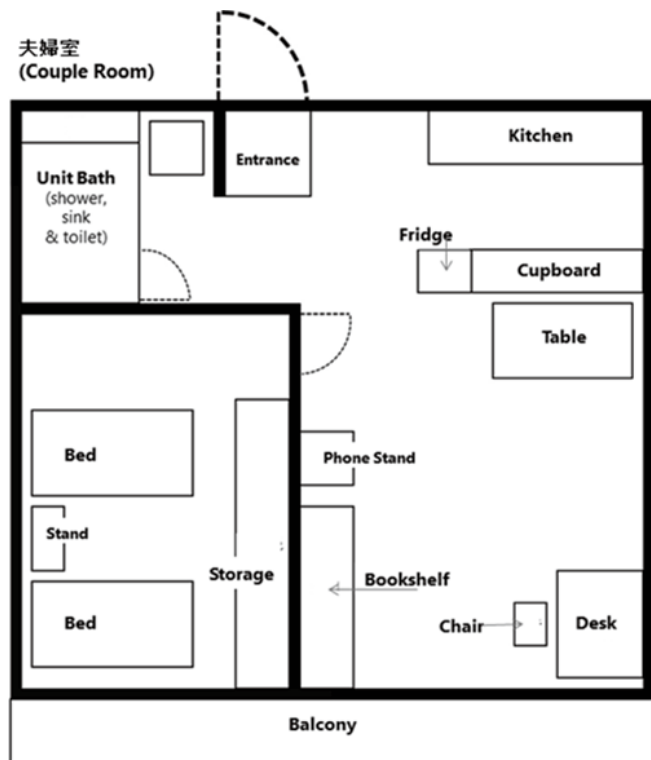
① International House



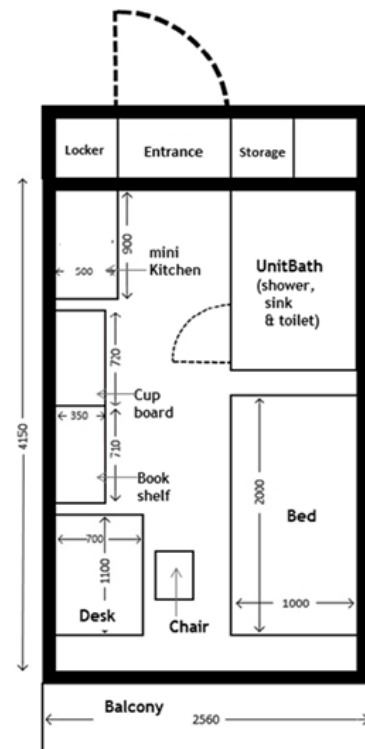
夫婦室の様子 / Couple Room



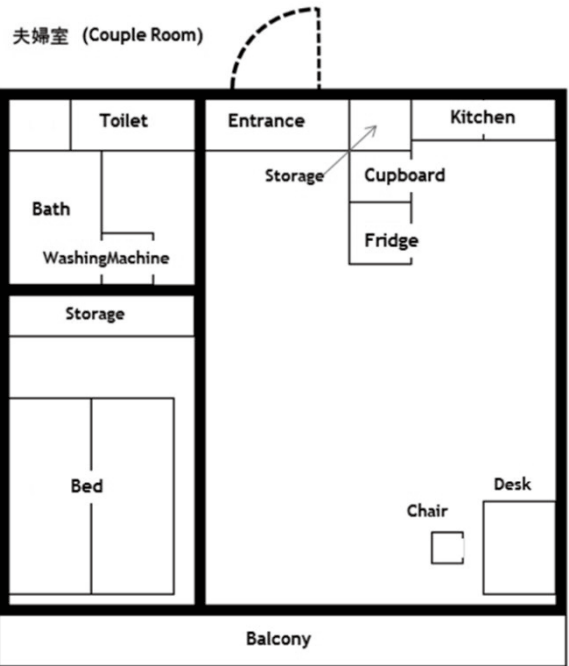
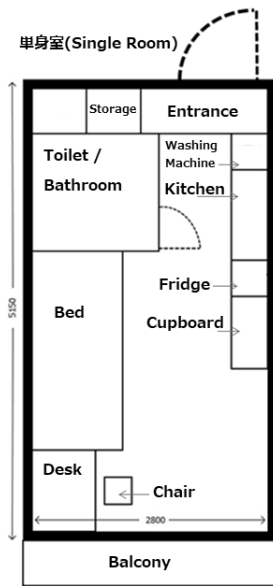
玄関ホール / Entrance Hall



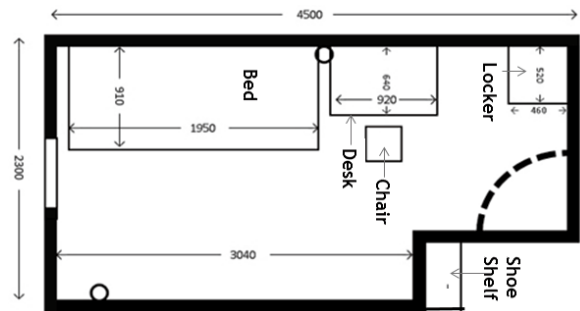
② International Student House



③ 30th Anniversary Student House



④ Student Dormitory



⑤ LinkTeCH House

LinkTeCH House is a share-house style dormitory. The dormitory consists of 12 units (82 single rooms). Each unit has 6 to 7 single rooms with common living/dining room/kitchen, shower room, toilet, washbasin, washing machine and shoe boxes.

1 unit is shared among 6 to 7 residents.



個室/Single Room



シャワールーム/Shower Room



リビング・ダイニング・キッチン/Living/Dining Room/Kitchen



洗濯機・洗面台/Washing machines, Washbasin

2. Renting an Apartment

Visit local real estate agencies to find an apartment or house.

Contact information of real estate agencies near NUT is listed on page 96.

(1) SHINSAI Room & Lodging Union, *Shinsai Gesyuku Kashima Kumiai*

There are cheap apartments for single persons within 2 km from NUT campus. Students of NUT are not required to pay damage deposits, *Shiki-kin*, or key money, *Rei-kin*, to rent these apartments. If you are interested in finding an apartment with them, contact the SHINSAI Room & Lodging Union office, 0258-46-2533, or visit their website below for the latest information of available rooms. <https://www.kashimakumiai.org/>

*Plan well before you sign the contract. The contract requires you to live in the apartment until the end of academic year, which is in March as a general rule. If you breach your contract and move somewhere else before the contract ends, you must pay a penalty of 2-month worth rent at least.

* Students planning to rent a parking lot for an apartment from the SHINSAI Room & Lodging Union need to purchase a voluntary insurance for unlimited bodily and property damages for NUT to be your co-guarantor.

◆ Lottery for reservation of *Gesyuku Kashima Kumiai*

In every early-September, SHINSAI Room & Lodging Union, *Gesyuku Kashima Kumiai*, offers current students an opportunity to join the lottery to reserve an apartment room for April of the subsequent academic year. The time and place of the lottery and details of apartments are announced by a notice posted on their website, the Bulletin Boards, and flyers.

*Please note that due to Covid-19 prevention, applications are accepted via the application form on the website instead of lottery on campus.

(2) Tips for Moving-In to An Apartment

- **Rental Contract** Almost all explanations of the room, the contract, and related documents are written in Japanese. We recommend you to have a fluent Japanese speaker with you when you start looking for a room.
- **Before Move-in** Check the room with your landlord/real estate agent. Take photos of damages or stains and all rooms while they are still empty and report it to the landlord/real estate agent and Int'l Student Affairs. This may prevent you from paying extra for repairs when you move out.
- **Rent** Rent varies according to the size, built year, and equipped facilities of the room. About 30,000 to 50,000 yen is charged for the rooms around NUT area. Apartments in Japan are not furnished, so you must get whatever is needed for yourself.
- **Damage deposit, *shiki-kin* & commission to real estate broker, *chukai-tesuryo***
These are charged as well as one month's rent in advance when you sign the contract. *Shiki-kin* will be used to pay the cleaning expenses for when you move out. When *shiki-kin* was more than what actually costed, the remaining amount will be refunded to you; but if it was not enough to cover all expense to restore the room, you will need to pay the exceeding amount additionally.
- **Monthly Payment** In general, you will pay the rent for the next month at the end of the month. This may be done by automatic transfer of your bank. In addition to the public utility charges, common property maintenance fee, *Kyoeki-hi*, and neighborhood association fee, *Chonakai-hi*, may be added to your monthly expenses.
- **Roommate** If you wish to live with your friend or bring your family to stay with, you need an approval from your landlord. Make sure to inform and consult with the landlord beforehand.
- **Guarantor** A rental contract usually requires a guarantor in case of property damages and overdue payment. Please ask an eligible person in Japan to become your guarantor. When you are unable to find one, please inform Int'l Student Affairs. NUT has "Guarantor Program for International Students". Please read page 44 for details.

3. Guarantor Program for International Students

If you cannot find a guarantor for a housing contract, the Manager of Student Affairs will become the guarantor under NUT Guarantor Program for International Students. *You can use this system for real estate agencies listed on p.96. If you wish to sign a contract for an apartment with a real estate agency not listed, please contact the Int'l Student Affairs.

◆ Conditions

- 1) You must be a student of NUT.
- 2) You must have a resident status (visa) of "Student".
- 3) The landlord of your apartment must agree with you to use this guarantor program.
- 4) You must buy the Comprehensive Insurance for International Students by JEES.

◆ Comprehensive Insurance system for International Students by JEES

This system helps international students to conclude a housing agreement. It comprises comprehensive lodging insurance (lessee liability and personal liability insurance) and guarantor indemnity funds.

The premium is 4,000 yen for 1 year and 8,000 yen for 2 years.

◆ Necessary Documents to Apply

If you would like to apply, you need the following documents. Please come to Int'l Student Affairs for details.

- 1) Application for the guarantor program: available at Int'l Student Affairs
- 2) Rental contract issued by your real estate agency: must be signed and sealed by your landlord.
- 3) 2 original copies of Agreement: must be signed and sealed by your landlord.
- 4) Your certificate of JEES insurance: Int'l Student Affairs will issue one after your payment.

◆ Notes

- 1) This guarantor program is for NUT students only. If you graduate or are expelled from NUT, we inform your landlord of the termination of the guarantor program. If you wish to continue living in the same apartment after your status of residence changes, you must find a new guarantor.
- 2) If you wish to cancel the program, you may request a refund depending on the remaining period.
- 3) Not applicable to those who share a room with non-NUT international students.
- 4) Before moving in, you will need to take photos of all the rooms in your apartment (incl. the kitchen, bathroom and toilet) especially any stains or scratches and email them to the Int'l Student Affairs.

4. Public Housing run by Nagaoka city

Nagaoka city provides a low-rent housing for residents whose income is below average. Those in need of housing can contact the housing consulting office: 0258-39-2229 at the city office.

- A seal is required when applying for a public housing. Signatures are NOT accepted.
- When you are moving in, you are responsible for the expense of setting up the utilities i.e. water heater, and you need to pay for the removal fee when you are moving out also.
- Public housing tends to require a much higher charge for restoring to its original state when moving out. Before you move in, we recommend you to take pictures of every room and notable damages at empty condition. You can refer to those pictures at the move-out checkup.
- You are required to notify the person in charge well in advance before moving out so that you can discuss the restoration of the rooms with the person in charge in beforehand.