

About the "Multicultural Campus Project Toward Social Impact"

Multicultural Campus Project Toward Social Impact promotes the development, implementation, and expansions of subjects and courses that fall under multicultural collaborative learning, a process in which Japanese students and international students learn together and leverage their cultural diversity through the process of identifying, analyzing, brainstorming and proposing solutions, and implementing real-world solutions to address issues both in Japan and abroad in regions where universities and other institutions conduct

educational and research activities.

This project, launched by the Ministry of Education, Culture, Sports, Science and Technology (MEXT) in 2024, aims to have selected universities and other institutions lead the realization of a multicultural society, and that the educational and research activities through multicultural collaborative learning will lead not only to the brainstorming and implementation of solutions to address issues in Japan and broad, but also to generating lasting social impact.



Multicultural Campus Project Toward Social Impact

Type I

~ Establishment of a Global GIGAKU Collaborative Learning Model and development of R&D Professionals to transform Local Manufacturing Industries and Local Communities ~

Greetings from the University President

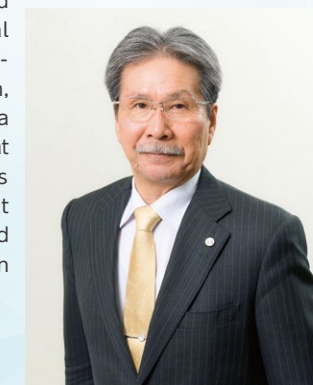
In November 2024, our university was selected by the Ministry of Education, Culture, Sports, Science and Technology (MEXT) as a recipient of the "Multicultural Campus Project Toward Social Impact" (Type I) for FY2024. The name of the project plan is "Establishment of a Global GIGAKU Collaborative Learning Model and development of R&D Professionals to transform Local Manufacturing Industries and Local Communities" Through this project, we aim to further develop our university's distinctive strength in GIGAKU education and establish an educational model that fosters talent capable of solving local issues in collaboration with the local community.

GIGAKU education, which is a type of practical engineering education, consists of three pillars: (1) Development of practical engineers through industry-academia collaboration, (2) Development of R&D professionals through integrated undergraduate/graduate education, and (3) Education involving the collaboration between KOSEN and Nagaoka University of Technology. By effectively integrating multicultural collaborative learning into these pillars, we aim to develop and implement the Global GIGAKU Collaborative Learning Nagaoka Model, ultimately generating university creation-based social impact through the university's contributions in scientific and technological innovation and real-world applications. Furthermore, by collaborating with local governments and KOSEN through multicultural collaborative learning, we aim to generate university-induced local creation-based social impact, where the influence of the university and students on the local community leads to contributions from the local government and companies.

Through the establishment of this educational model, we will realize an educational and research environment

(global campus) where all students, including those who do not study abroad, can develop a global mindset. By having international students who study on this global campus and develop advanced skills and management abilities choose to settle in Japan and work for domestic and local companies, we can pave the way for the utilization of foreign talent and the revitalization and diversification of local communities, ultimately leading to a multicultural society.

As outlined above, by promoting multicultural collaborative learning alongside GIGAKU education, we aim to create an environment where Japanese students, international students, and KOSEN students collaborate with local governments and local companies to address local issues, where local governments and local companies utilize R&D professionals to drive transformation in manufacturing and local communities, and where international students are encouraged to stay in Japan, ultimately establishing a sustainable system that fosters a continuous positive reinforcement cycle of technology and talent between Japan and abroad.



President, Nagaoka University of Technology
KAMADO Shigeharu

Establishment of a Global GIGAKU Collaborative Learning Model and development of R&D Professionals

Establishment of a Global GIGAKU Collaborative Learning Model and development of R&D Professionals to transform Local Manufacturing Industries and Local Communities

By implementing multicultural collaborative learning subjects on local issues, we aim to realize a truly global campus, foster the retention of foreign R&D professionals in Japan, and promote multicultural coexistence with the local Japanese population.

By having Japanese students and international students collaborate in learning about local issues, the program aims for them to:

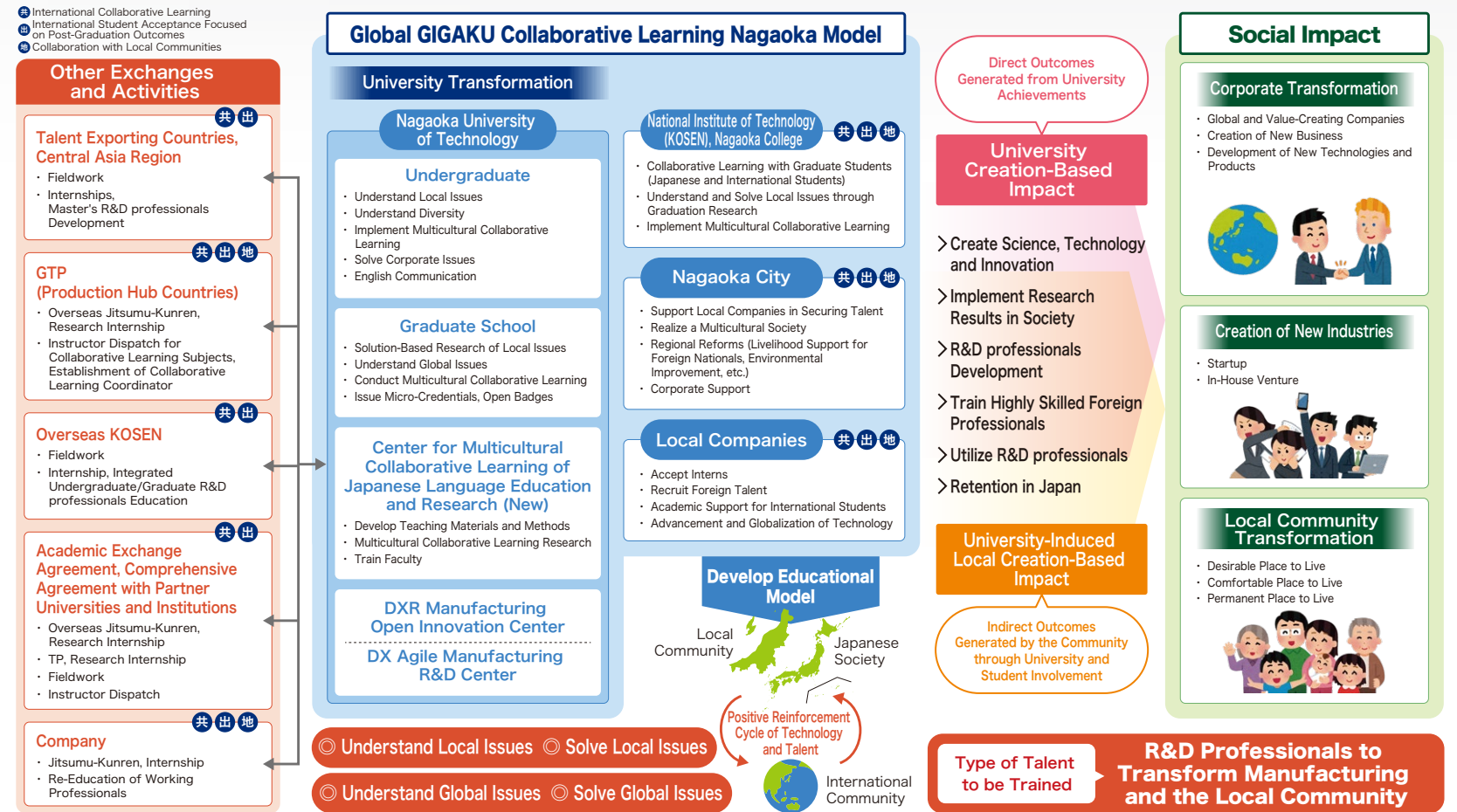
- Understand regional issues both in Japan and abroad
- Recognize cultural and perspective differences between each other

Through this mutual exchange between Japanese students and international students, the program aims to:

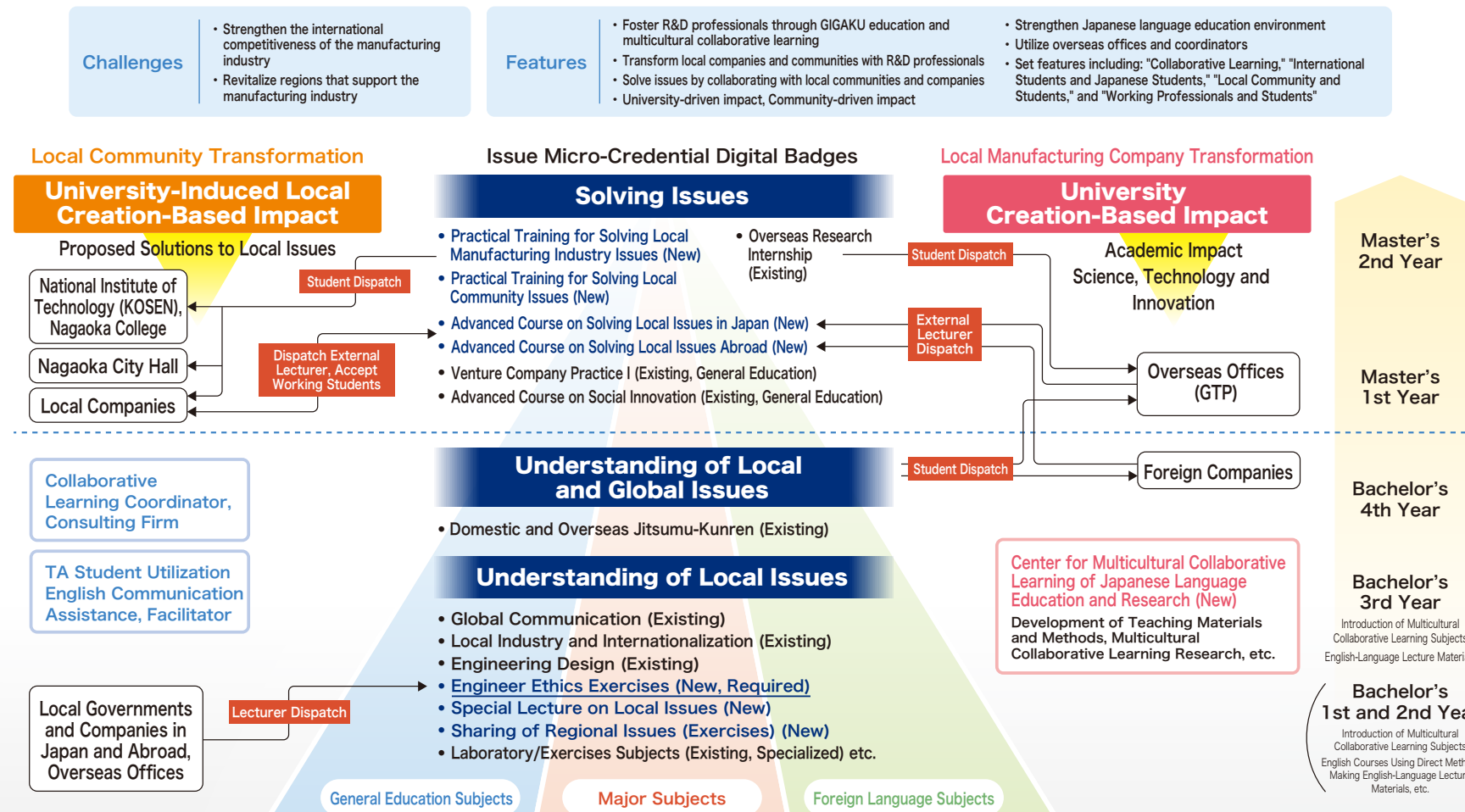
- Help Japanese students enhance their awareness of society and their own country, as well as develop an understanding of other nations and cultivating an attitude of embracing diversity
- Help international students deepen their understanding of Japanese society while gaining a renewed awareness of issues in their own countries

By incorporating municipalities, local companies, and KOSEN into this multicultural collaborative learning initiative, it is expected to:

- Address real-world local issues effectively
- Incorporate diverse perspectives into problem-solving through the participation of international students and individuals across various age groups
- Shift perceptions in the region and businesses regarding the acceptance of foreign talent



Integrated Undergraduate/Graduate Global GIGAKU Collaborative Learning Curriculum



Type of Talent to be Trained

Aiming to transform local manufacturing industries and communities, we will integrate multicultural collaborative learning into GIGAKU education through collaboration with local communities, developing it into a "Global GIGAKU Collaborative Learning" framework to cultivate global R&D professionals capable of understanding and addressing local issues. Furthermore, by embodying the GIGAKU philosophy of "drawing out theories from practice and then testing it again in practice," and through practical multicultural collaborative learning that aims to solve local issues in collaboration with local governments, KOSEN, and overseas offices, we will foster talent that serves as the core for generating university-driven and community-driven social impact.